

Wisconsin Soybean Update

Keeping you informed about your checkoff investment
Issue 3 Winter 2012



FROM THE PRESIDENT



As I start to gear up for another planting season, I like to reflect on last season. This past year was another good one for Wisconsin soybean farmers. There weren't many aphids in my area and little pressure from disease, which resulted in my farm having a smooth harvest and high yields. I hope you all had the same success.

As soybean farmers, the winter months give us a tremendous opportunity to take some time and learn more about our crop. I know it can often be hard to pull yourself away from the farm, but I urge you to take advantage of all of the meetings and

conferences that will be happening across the state this winter. Also, the winter is a great time to catch up on the latest soybean research. Production research continues to be a top priority for the Wisconsin Soybean Marketing Board (WSMB), and we want to make sure you have up-to-date information on checkoff-funded research projects.

Please, take a minute to read about some of the ways the soybean checkoff works to make sure you have the latest information available to help you plant, grow and harvest a successful soybean crop this year.

Mike Cerny, President

You're Invited to the 2012 Corn/Soy Expo

The WSMB will partner with the Wisconsin Soybean Association, Wisconsin Corn Promotion Board and the Wisconsin Corn Growers Association to sponsor the 2012 Corn/Soy Expo on February 2-3 at the Kalahari Resort in Wisconsin Dells, Wis.

The Wisconsin Soybean Marketing Board/Wisconsin Soybean Association's annual meeting will be held during the expo. The Expo will also host several general education sessions about weather, markets, agribusiness and rural life.



Wisconsin Soybean Farmer-Leaders

President

Mike Cerny, Walworth

Vice President

Patrick Mullooly, Clinton

Secretary/Treasurer

Dennis Steigenberger, Pulaski

Steve Stetzer, Melrose

Jeff Braudt, Fennimore

Keith Ripp, Lodi

Eugene Weis, Union Grove

Contact Information

Wisconsin Soybean

Marketing Board

Robert Karls, Executive Director

2976 Triverton Pike Road

Madison, WI 53711

608-274-7522

www.wisoybean.org



Farmers attending the Expo will have the opportunity to attend the following breakout sessions:

- Benefits of Atrazine
- Controlled-Release Fertilizers: Sorting Through Options
- Economics of Soybean Seed Treatments
- Farm Bill Expectations
- Farm Transfers
- Goss's Wilt & Other Diseases
- Grain Storage Tips
- Making Consumer Connections
- Pork Industry Rapid-Fire Session
- Resisting Resistance on Wisconsin Farms
- Soybean Yield Winners Management Breakdown

The whole family can participate in this year's Corn/Soy Expo. The expo will have two kids' sessions and three family sessions about farm transfers, consumer connections and a cooking demonstration.

Besides the meetings and educational

sessions, the expo features an industry trade show and the Taste of Elegance reception sponsored by the Wisconsin Pork Association.

To register to attend the 2012 Corn/Soy Expo, please visit www.CornSoyExpo.org.



► Just a Click Away

Most of your checkoff dollars go toward research that will directly help you on your soybean farm. To get the results of that research into your hands in a timely manner, the WSMB and soybean-checkoff-funded researchers have created several Internet-based

resources. “Farmers are becoming more and more tech savvy,” said Shawn Conley, Wisconsin State Soybean and Wheat Extension Specialist. “By using the Web, we can get timely information out to farmers quickly and directly.”

Take some time to check out these three online resources.

Soybean Plant Health Website

fji.uwex.edu/fieldcroppathology/soybean/

The *Soybean Plant Health* website provides farmers with recent research-based information on diseases and pests of Wisconsin’s field crops. On the website, you can find reports, pictures and videos on a variety of soybean health topics, including soybean aphids, Asian soybean rust, soybean cyst nematodes, sudden death syndrome and more. The *Soybean Plant Health* website houses tools like the *Visual Quick Guide to Common Soybean Diseases*. This guide includes pictures and information regarding symptoms, risk factors and management options for all the common soybean diseases found in Wisconsin.

The Soybean Report Blog

thesoyreport.blogspot.com/

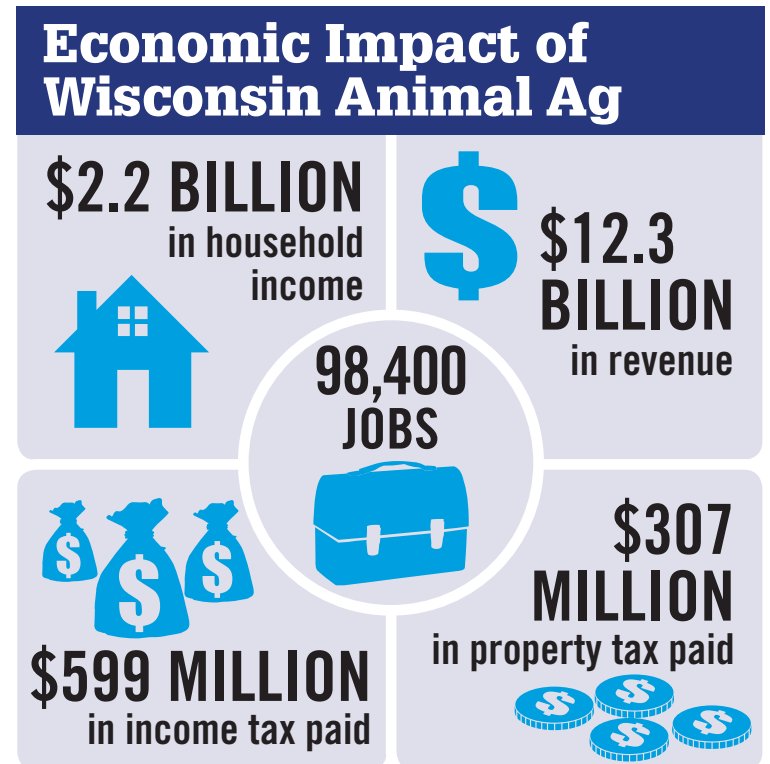
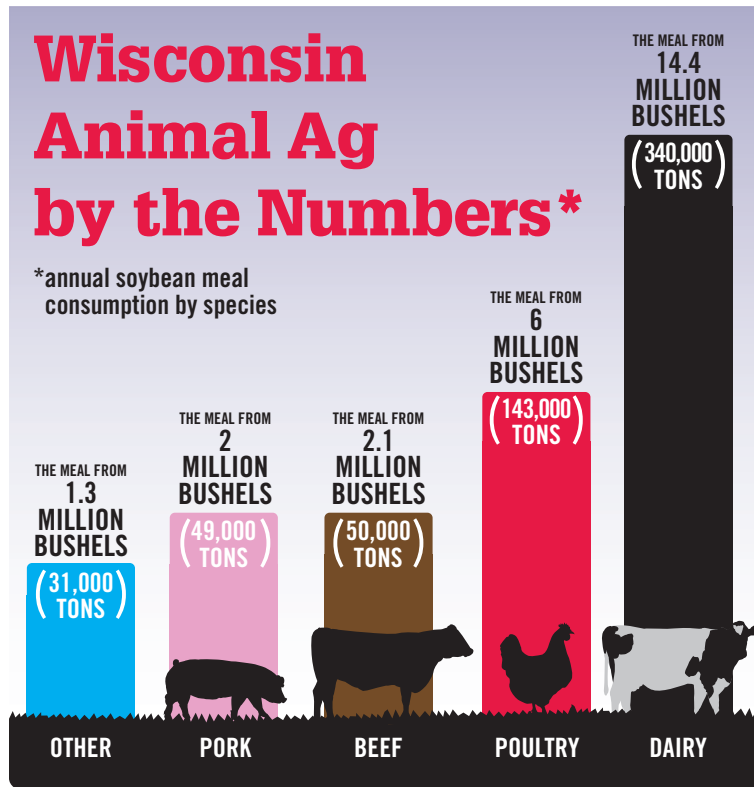
Conley and fellow checkoff researcher Paul Esker created *The Soybean Report* blog as a way for researchers to communicate directly with you. Several soybean researchers write posts for the blog to give Wisconsin soybean farmers real-time information that can help you better your crop. The researchers update *The Soybean Report* weekly during the growing season.

CoolBean.info

soybean.uwex.edu

CoolBean.info offers an online encyclopedia of soybean research and information. The website has a searchable database that contains hundreds of links to web-based publications about soybean agronomy and production. Also, you can sign up for the *CoolBean.info* Listserv and receive up-to-date information related to Midwest soybean and small grains production.

©2012 United Soybean Board. [44377 1/12]



Source: Animal Agriculture Economic Analysis: Wisconsin, 2000-2010, Promar International

WISCONSIN SOYBEAN UPDATE – ISSUE 3 - WINTER 2012

Look inside for the latest news from Wisconsin Soybean Marketing Board

